

How to reach Centre AMATA – Description for pilgrims

The AMATA Centre is less than 3 km southwest of the village of Valencogne, at 99 chemin de Brézin 38730 Valencogne. The Pilgrim's Way to Santiago passes through the forest above our house, but there is no direct access. You have 3 possibilities to reach us:

1. **On foot, the shortest distance and on the flattest ground:** it takes 40 minutes to walk from the church of Valencogne. 10 minutes on a village road, 10 minutes on the D17C and 20 minutes on a path through the fields. This road runs parallel to the Chemin de Saint Jacques and is more direct to reach Le Pin, but is not as bucolic as the Chemin de Compostelle. From the church, go down the main road, D17D called 'Montée du Village', follow the road when it turns to the right (P1). At the T-junction, turn left onto the D17C (P2 and P3), 'route des Marais'. A little further, take the first path on the left at the house numbered 100 (P4 and P5). This path turns to the right in front of a depot (P6). Be careful, a little further there is a junction (P7). Don't follow the path that goes up, the left one, it's a dead end ! Stay on the bottom one, the one on the right and continue straight. 500 meters later, the path joins a small road ('Chemin de Brézin', P8). Go straight to our house. Our house is the second on the left (P9), with the number 99 on the entrance gate.

From left to right and from top to bottom P1 to P9:

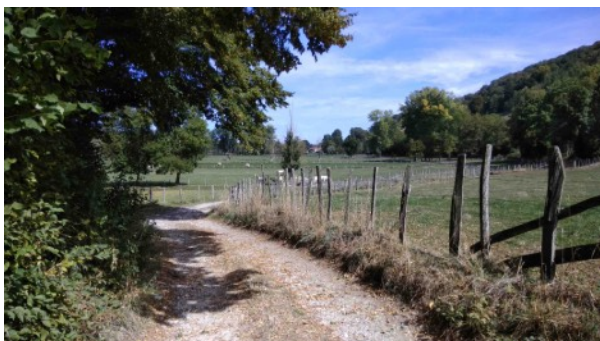




2. On foot, the most beautiful, but with more distance and elevation differences: you continue from Valencogne on the Camino de Santiago (the path turns left just before the church), it goes down and then ascends to the top of the hill, follow it for approximately 5 km . At the crossroads with the Chemin de vie (signpost Simandre) (P10, P11 and P12), follow the Chemin de Vie on your right which descends towards Brézin for 1 km (Just note the post was recently torn off and was just placed against a tree, it can be misplaced also). At the exit of the forest, you will find a small series of houses on your right, recently built. Right after these houses, there is a dead end path also on the right, do not take it (P13). Follow the 'chemin de vie' and take the next right more at the entrance to the village of Brézin (P14) with a sign 61 (P15 and P16). This path leads directly to our house located 800m from this junction, passing through fields and pastures (P17). When you reach the end of the path and it becomes a small road, turn around, our house is just there (P18), the number 99 is on the entrance gate. This option makes a total of plus or minus 6 km from Valencogne centre. It is a very nice route but it takes more time, the advantage: you do not miss any meter of the path of Compostela.

From left to right and from top to bottom P10 to 18:





3. **By car, the fastest and for tired legs:** we pick you up for free at the Valencogne church around 5 p.m., appointment to be agreed minimum 24 hours in advance, because we are not always reachable, not being always near the telephone of our fixed line and the portable having very little network.



Passed the entrance gate, go straight, you will find on the right side of the alley a bell. Please ring it to announce your arrival and wait a bit, we are arriving as soon as possible to welcome you.



And for your departure the next day:

Just starting from our house, you can take a nice path through fields and pastures, for about 800m to Brézin. There you have two options:

1. When reaching Brézin, you go on your right along the 'Chemin de vie', going up the hill for about 1km, on the top, there will be a junction with the signs of the path of Compostela, go on your right towards Le Pin. It is longer with more difference of altitude but the advantage is that you will miss less from the Path of Compostela itself.

2. You can also go straight from Brézin directly to Le Pin and join the Chemin de Compostela at the entrance of Le Pin, it is a comfortable shortcut and it is a beautiful little road without much traffic and completely flat.

If we came to pick you up in Valencogne the day before, you don't want to miss any meter of the Camino and you want to be driven back to the church of Valencogne, it is also possible but we charge an additional fee.